

CONTENTS

INSTALLING AND STARTING UP	2
NAVIGATING THE MENUS	3
STORY	4
BEGINNING BEYOND GOOD & EVIL™	4
LOADING & SAVING	5
MAIN FUNCTIONS OF KEYBOARD AND MOUSE	6
CONTROLLING JADE	7
CONTROLLING COMPANIONS	8
CONTROLLING VEHICLES	8
CONTROLLING CAMERAS	9
COMBAT & SPECIAL ATTACKS	10
MAIN GAME SCREENS	11
OBJECTS & ACCESSORIES	12
TECHNICAL SUPPORT	14
WARRANTY	15



INSTALLING AND STARTING UP

TECHNICAL SPECIFICATIONS

Minimum configuration:

Windows 98SE / ME / 2000 /XP

Intel and AMD processors, 700 Mhz

RAM: 64 MB with 98SE, 128MB with ME/2000/XP

Graphic cards: Direct X 9 compatible with T&L and 32 MB RAM, GeForce 256 or Radeon 7200

Sound card: Direct X 9 compatible

Recommended configuration:

Windows 98SE / ME / 2000 /XP

Intel and AMD processors with SSE, 1.3Ghz

RAM: 128 MB with 98SE, 256MB with ME/2000/XP

Graphic cards: Direct X 9 compatible with T&L and 64 MB RAM, GeForce 3 or Radeon 9500

Sound card: Support EAX, Sound Blaster Audigy

INSTALLING

To install *Beyond Good & Evil*, follow these simple steps:

1. Start your computer.

2. Insert the *Beyond Good & Evil* CD N°1 into your CD-ROM drive. The Autorun menu should appear.

Note: If the Autorun menu does not automatically appear, double-click on the My Computer icon located on your desktop, then double-click on the icon that corresponds to your computer's CD-ROM drive. The Autorun menu should now appear.

3. Click on the Install button. The installation wizard now walks you through each step of the setup and installation process for the game.



ACCESS PATH

You should then choose the location on your hard disk where you wish to install the game. By default, the installation process suggests:

"c:\Program files\Ubisoft\Beyond Good & Evil".

UNINSTALLING

There are two ways of deleting the game from your hard disk:

1 – In Windows, select "2 Uninstall Beyond Good & Evil" in the "Start\Programs\Ubisoft\Beyond Good & Evil" menu.

2 – Insert CD N°1 of Beyond Good & Evil, launch the game, admire the splendid installation menu and select "Uninstall".

If you uninstall Beyond Good & Evil, all previously saved games remain on your hard drive, unless you answer Yes to the "Delete all configuration and saved games files?" question.

Note: You can also uninstall Beyond Good & Evil by using the Add/Remove Programs control panel in Windows.

LAUNCHING THE GAME

Once the game is installed, all that remains is simply to launch the game from the Windows Start menu. The default path is: "Start/Programs/Ubisoft/Beyond Good & Evil".

The first time you launch the game, a configuration screen will appear. It will allow you to configure all the display data to suit your computer.



NAVIGATING IN THE MENUS

To navigate the BEYOND GOOD & EVIL menus, use the directional arrows, the mouse wheel, or the W and S keys. To confirm a choice, left-click on the selection. To go back to a previous page, right-click.

The keyboard keys can be redefined using the configuration tool. You are strongly advised to use the default configuration described in this manual. The manual presumes that you are using a QWERTY keyboard and that your mouse is configured for a right-handed person.

Don't let these technical terms scare you! The Beyond Good & Evil interface has been designed in such a way that it is not compulsory to read the manual.

In fact, the keys you have to use are displayed during the game in the form of subtitles or contextual help. So you don't have to memorize everything now! We will remind you which key to use when you're in the thick of the action. That's what we call "ergonomics"!

Talking of ergonomics, if you're right-handed, place your left hand to the left of the keyboard so that your arms are sufficiently far apart. This position will enable you to play for hours on end, without getting tired.

Ready?! Make sure you're sitting comfortably, with one hand on the keyboard and the other on the mouse. Let's go!

4

STORY

Every day on the planet Hillys, the DomZ attacks strike the population. The Alpha Section intervention troops seem incapable of protecting the people.

You play the part of Jade, a young reporter with a mysterious past. Will you succeed in saving the planet Hillys and unveiling the secrets of the DomZ invasion? Your best weapons are your camera, your faithful companions and your desire to reveal the truth. But watch out! The dividing-line between good and evil is sometimes very thin indeed!

BEGINNING BEYOND GOOD & EVIL™

LANGUAGE SELECTION

When you start up BEYOND GOOD & EVIL on your PC, the first menu allows you to choose from several different languages. Select the language of your choice using your mouse wheel, the directional arrows, or the W and S keys. Then validate your selection by pressing the left mouse button. If you happen to make a mistake when selecting a language, you must quit the game (Alt+F4) and restart. But you can try out other languages. It's fun hearing Jade speak impeccable Italian, just like a native. You must admit, she's a really talented heroine!

STARTING THE GAME

Once you have selected a language, the Start-up menu appears automatically.

START-UP MENU

New Game: Begin a new game.

Load: Access a previously saved game.

Options: Configure the game's Sound, Video & Control settings.

Exit: Quit the game



NEW GAME

Select "New Game" in the start-up menu to begin a new game, and confirm your choice by pressing the left mouse button. BEYOND GOOD & EVIL will start up automatically.

LOADING AN EXISTING GAME

Select "Load" in the start-up menu to access a previously saved game. A menu appears on-screen showing all the available saved games. You can save up to 5 different games. Select the game you want with the mouse wheel, directional arrows, or W and S keys and left-click to validate your choice.

OPTIONS

Select "Options" in the start-up menu to set the game volumes, remove the subtitles or change the mouse settings. For all the Options screens, use the right mouse button to go back without making any changes, and the left mouse button to confirm your choices and save changes.

VOLUME SETTINGS

Select "Sound" in the Options menu and adjust the volume using A and D keys.

You can also change between mono and stereo modes by selecting the Mono/Stereo option with W and S keys and confirming your choice by pressing the Space bar.

To remove or display the subtitles, select the Subtitles option with the W and S keys and choose Yes/No by pressing the Space bar. Next, select Yes/No to launch.

CONTROL SETTINGS

Select "Control" on the Options screen and validate by pressing the left mouse button. You may then change the Camera and Aiming modes (normal or reversed). Select the configuration of your choice with the W and S keys, then change the mode by pressing the Space bar.

You can change the mouse sensitivity using the A and D keys.

LOADING & SAVING

LOADING

You can load another game whenever you want.

To do this, press the "Esc" key on your keyboard to display the main menu, then select Load by moving the cursor with your mouse. Validate with the left mouse button to open the loading screen. Next, choose one of your saved games and validate by left-clicking.

Caution: if you have not saved the current game in progress before loading one of your saved games, it will be lost.

SAVING

To save a game in the **BEYOND GOOD & EVIL** universe, you must find one of the saving terminals distributed in different places on the planet Hillys. These saving terminals can also be used to read the Mdisks that the Jade character is carrying. One of these Mdisks (the green one) is specifically intended for saving your games. To save a game, position Jade in front of an Mdisk reader and press the **Q** key or the left mouse button. Move down through the different Mdisks in your possession using the **W** and **S** keys, choose the saved game Mdisk and validate by pressing the left mouse button or cancel by pressing the right mouse button. Then simply follow the instructions on the screen.

EXITING THE GAME

From the Start-up menu, select "Exit". You will be asked to confirm your choice.

To go back to the Start-up menu if you are in the middle of playing, press the "Esc" key, select the "Loading/Option" option and then select "Main Menu".

You can also press the **ALT+F4** keys at any time to quit the game and go back to the desktop.

Before quitting the game, remember to save your game, if you wish to do so.

MAIN CONTROL FUNCTIONS OF KEYBOARD AND MOUSE

WASD keys:	to move Jade or her vehicle.
Mouse:	to direct the camera.
C key:	to reposition the camera behind Jade.
Shift:	to switch to Look or Camera Mode.
Space bar:	to switch to Run or Acceleration Mode.
Ctrl key:	to switch to Crouch or Stealth Mode.
Esc key:	to access the game menu or pause during the game.
Tab key:	to access objectives menu, e-mails, card and detectors.
Q key:	to use a selected object.
E key:	to ask companions for help, or shift to Interior View Mode while driving the Hovercraft.

Right mouse button: to roll, dive or dodge with Jade, make the hovercraft jump, fire with the gyrodisk glove, or go back to a previous page.

Left mouse button: to validate, perform contextual actions, trigger a Super Attack, take a photo, shoot, or lock onto a target.

Keys 2 and 3 (to the top left of the keyboard): to select objects in the inventory.

CONTROLLING JADE

To **MOVE** Jade, use the WASD keys to indicate the direction of your choice (A - left, W - up, D - right, S - down). To **RUN**, press once on the Space bar. To **WALK**, press or release the Space bar.

To **MOVE STEALTHILY**, use the WASD keys to indicate the direction of your choice while pressing the "Ctrl" key. In this mode, Jade remains crouching down and makes less noise when she moves. To stand up, press or release the "Ctrl" key.

To **JUMP**, most of the time Jade jumps over precipices and other obstacles automatically. In some cases, however, you will have to direct her and press on the left mouse button.

To **ROLL** or **DIVE**, press the right mouse button. Rolls also enable you to avoid attacks from certain enemies.

To **FLATTEN YOURSELF AGAINST A WALL** and move along it, approach the wall and Jade will flatten herself against it automatically whenever possible. Then use the WASD keys to move in the direction of your choice.

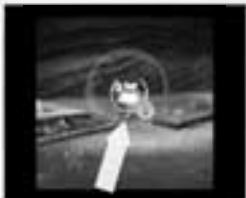
To **HANG ON** and **CLIMB** ladders or vertical walls, move up against the surface with the WASD keys and Jade will jump and hang on automatically. You may then climb by pushing the W key or come down off the wall by pressing the S key.

To **PUSH** a heavy or large object, position yourself against the object and move Jade in the desired direction using the WASD keys. In some cases, the objects to push are too heavy and Jade will have to ask her companions for help.

To **SMASH IN** or **FORCE** a door or a grate with the foot, move Jade against the opening with the WASD keys and press the left mouse button.



To **TAKE A PHOTO**, press the "Shift" key to shift into Aiming Mode, use the mouse to direct the camera, the mouse wheel to zoom in or zoom out and focus, and – when you're happy with the framing – press the left mouse button to take the photo.



Subject incorrectly centred.



Subject correctly centred.

To direct Jade when fighting, see the **Combat & Special Attack** section.

CONTROLLING COMPANIONS

Jade is nearly always accompanied by one or two companions who help her in her quest for the truth. They try to assist her to the best of their abilities, following and acting for themselves whenever possible, but sometimes you have to ask them to perform a specific action to use a particular power or object in their possession.

To ask a companion to perform a specific action, press the **E** key.



CONTROLLING VEHICLES

For the most part, the vehicles are controlled in the same way as Jade: she is the one who is at the controls. In the course of the adventure, various accessories appear to enhance their abilities.

To **DRIVE** a vehicle, use the **WASD** keys to indicate the direction of your choice. To **ACCELERATE**, press the **Space** bar.



To shift into INTERIOR VIEW mode, press the E key. This also allows you to use the compass to find your way around the planet Hillys more easily.

To DRAW ALONGSIDE a quay in the hovercraft, press the left mouse button.



To SHOOT, press the left mouse button. When you have installed the neutralizing cannon, you will also be able to hit a larger number of targets by LOCKING on to them. To do this, move towards the target and keep the left mouse button pressed down for a few moments until the sights appear, then release.



To JUMP over an obstacle or reach steep paths, press the right mouse button.

To TAKE A PHOTO with a vehicle, press the "Shift" key to shift into Aiming Mode, move the mouse to turn the camera in the desired direction and use the mouse wheel to zoom in or zoom out and focus. When you are happy with the framing, press the left mouse button to take the photo. You cannot move around in Photo Mode.

To RELEASE the hovercraft from the ship when you are on water, press the right mouse button. To reconnect the hovercraft to the ship, position yourself under the ship that is waiting on automatic pilot and press the right mouse button.

CONTROLLING CAMERAS

By default, the camera follows Jade or her vehicles and positions itself automatically to provide an optimum view of the situation. You can also use the mouse to turn the camera round: this is very practical in certain game sequences for anticipating dangers or enemies.

To shift into LOOK MODE, press the Shift key. You can turn the camera by moving the mouse on its mat. When Jade has her camera, Look Mode also becomes AIMING MODE, allowing you to zoom in precisely or shoot a projectile. In some cases, you may need to REPOSITION the camera quickly behind Jade. To do this, press the C key.

COMBAT & SPECIAL ATTACKS

Jade fights her enemies and the creatures who inhabit the planet Hillys using her Dai-Jo stick. Through the Dai-Jo stick, the power that sleeps in Jade wakes up and generates a Super Attack.

STICK FIGHTING

To strike with the Dai-Jo, press the left mouse button. When fighting several enemies simultaneously, you can use the WASD keys to direct and distribute the blows. The blows change automatically, according to your position. Depending on whether you press the left mouse button slowly or quickly, Jade can shift into a faster and more powerful whirlwind attack.



SUPER ATTACK

When Jade is not in motion, she can concentrate and release an energy discharge which affects all the enemies in the zone. To trigger the Super Attack, press the left mouse button and keep it pressed down for a few moments, then release it when enough Dai-Jo energy has built up.



FIGHTING WITH COMPANIONS

The companions take part in the fighting of their own accord, whenever possible, but each one has their own Special Attack and awaits your orders before using it. In some cases, it is vital for Jade and her companions to cooperate well if they want to gain victory in a fight. To ask a companion to use their Special Attack, press the E key.



Right mouse button to dodge

MAIN GAME SCREENS

MAIN SCREENS

From this screen you can access inventory menus, Jade's main accessories, the companions' inventories, vehicles, e-mail, objectives, maps and Load/Options menus. Move the cursor in the spiral by moving the mouse and confirm your choice by pressing the left mouse button. Press the right mouse button to go back to the game.



S.A.C.

The S.A.C. contains all the objects found by Jade. Move the cursor in the spiral using the mouse and confirm by pressing the left mouse button to open the S.A.C. Small arrows at either end enable you to scroll through the different pages of objects. You may also drag an object to a companion, or vice versa, by selecting it and dropping it onto the character icon of your choice. Press the Space bar for information about an object. Press the right mouse button to go back to a previous page.



REPORT SCREENS

To consult the progress of your current reports, select the Camera icon and validate with the left mouse button. You will then access the different icons corresponding to your photo album and the different reports, whether finished or still under way.



OBJECTS & ACCESSORIES



CAMERA: This is more than an accessory. It is Jade's main tool of trade. It can store and transmit photos and reports, receive information and e-mails, and a database also provides information about objects or creatures that are in your line of sight. You may also scan maps and record them to help you find your way about.



PEARLS: Pearls are objects of great value, used as an unofficial currency by a good number of Hillyans. As a matter of fact, some storekeepers will only accept this means of payment. Jade must accumulate as many pearls as possible to buy the equipment she needs for her mission.



CREDIT CARD: This card automatically stores all Materia units won or found by Jade. It must always be presented when you want to make a purchase.



STARKOS: Starkos are like synthetic bread rolls, and they're very energy-giving. They restore 1 heart of energy. Jade can give Starkos directly to her companions in the game. To do this, select the Starkos with the directional keys, approach your companion and "give" by using the Q key.



K-BUPS: K-Bups are high-energy food for Hillyans. Consuming 1 K-Bup restores all your energy. As with Starkos, you can transfer K-Bups directly from your inventory to a companion's inventory by approaching the companion and pressing the Q key.



AP-1S: AP-1s are physiological accelerators which increase your physical resistance. Each AP-1 you possess increases the life gauge of Jade or her companions by 1 heart. It is possible to possess several AP-1s.



MECA-IMPULSER: These are mechanical versions of the AP-1s which increase the resistance and armor-plating of vehicles.



GYRODISK GLOVE: The glove generates and projects small disks of energy that can activate mechanisms from a distance and may sometimes even affect small animals. The variety of uses to which they can be put is only limited by the user's imagination. To use the Gyrodisk glove, press the "Shift" key to shift into Camera/Aiming Mode, use the sights to target your object and press the right mouse button key to fire.



KEYS: The Keys are the coded magnetic passes used by the Hillyan army. There are various kinds, each specific to a particular type of lock. Jade must get hold of several of these keys in order to infiltrate certain secret places.



TICKETS: These little cards are generally used as memos for codes and other things.



ANIMAL DETECTOR: This long-range detector, linked up to your database, is very useful. It detects and analyzes the presence of animals or creatures in a zone and shows you where they are on the map.



MDISKS: Mdisks are the memory disks commonly used on Hillys for information storage, e-mail and other messages, databases or simply as daily newspapers.



PEARL DETECTOR: This long-range wave scanner analyzes the sound frequencies emitted by pearls and shows you where they are on the map.



STRENGTHENED SUPER ATTACK: This accumulator allows Jade to increase the power within her. When she possesses it, her Super Attack is more powerful and generates bursts of energy discharges.



BOOST: These super-fuel capsules make your vehicles accelerate suddenly for a few seconds, multiplying their speed by three.



PODS: These small drones are very useful and enable you to repair your damaged vehicles.

UBISOFT CONTACTS AT YOUR DISPOSAL

TECHNICAL SUPPORT

NEW: To serve you better, Ubisoft is now providing full **ONLINE** support, to solve your gaming problems quickly and efficiently.

Simply go to ubisoft-en.custhelp.com and visit the Ubisoft Frequently Asked Questions first!

By visiting our **FAQ** database, you can find exactly the same answers that are available to you by calling or sending email to our support representatives. This service is free and available **24/7!**

If for any reason you do not find the answer to your question, you can click on the **Ask a question** link in the **FAQ** to send us an email, ensuring that we get all the important information on your system and your problem so we can answer correctly the first time.

Make sure to include all information on your system, your problem, and the game you are playing.

If you do not have e-mail access, our support representatives can assist you from **9:00 am until 7:00pm, Monday – Friday (excluding Bank Holidays)** on Telephone: **0905-482-0109**. Calls cost **30p** per minute. Please be at your system when calling Ubisoft for support.

AUSTRALIAN TECHNICAL SUPPORT

Technical Support Info Hotline

1902 262 102

(calls are charged at \$1.98 per minute including GST. Higher from public and mobile phones).

HINTS & TIPS

Looking for cheats to go up to the next level? Call us for Hints and Tips Telephone Number: **0906 643 0200**, available hours **9.00 am until 7.00 pm Monday – Friday (excluding Bank Holidays)** to speak to one of our representatives. Calls cost **£1.50** per minute, please ask permission from the person who pays the phone bill.

UK WARRANTY

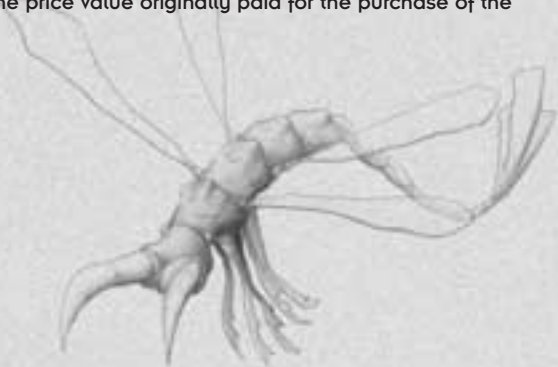
Ubi Soft guarantees to the original buyer of the product that the compact disc (CD) supplied with this product shall not show any fault during a normal-use period of ninety (90) days from the invoiced date of purchase.

Please return any defective product to; Ubi Soft Entertainment Ltd., Chantrey Court, Minorca Road, Weybridge, Surrey, KT13 8DU together with this manual and your registration card if you have not already sent it to us. Please state your full name and address (including postcode), as well as the date and location of purchase. You may also exchange the product at the place of purchase.

If a disc is returned without proof of purchase or after the warranty period has expired, Ubi Soft will choose either to repair or to replace it at customer expense. This warranty is invalid if the disc has been damaged through negligence, accident or misuse, or if it has been modified after acquisition.

This software program, manual and packaging are protected by copyright and all rights are reserved by Ubi Soft. Documentation should not be copied, reproduced, translated or transferred, in whole or in part and in whatever form, without prior written agreement of Ubi Soft.

This software program, this CD and its documentation are sold as they stand. Outside the guarantee period of 90 days concerning any manufacturing defect of the CD, Ubi Soft will not extend any other guarantee concerning this program, this CD nor its documentation, be it written or verbal, direct or implied, including but without limitation of the above, guarantee and conditions of marketing and use for specific purposes even though the company may have been informed of such use. Similarly, you shall be entirely responsible for any risks relative to utilisation, results and performance of this software program, of this CD and the documentation. Ubi Soft shall in no event be liable to you or a third party for indirect or consecutive damages, nor specific damages relative to ownership, the use or the wrongful use of this product and, within the limits provided by law, damages in case of bodily injury, even if Ubi Soft has been informed of such possible damages or losses. The buyer wholly accepts that, in case of legal claim (contract, prejudice, or other) the liability of Ubi Soft shall not exceed the price value originally paid for the purchase of the product.



WANT TO SEE MORE?

Then log on to www.beyondgoodevil.com/uk and be ready to discover:

- a special bonus by entering your "Internet Code" from the game
 - new screenshots and videos
 - lots of e-goodies
 - hints and tips on the game
- regular competitions with fantastic prizes
- forums where you can discuss and share your experience of **BG&E**
 - and some more surprises!

Will you be the one to capture the truth on

www.beyondgoodevil.com/uk

